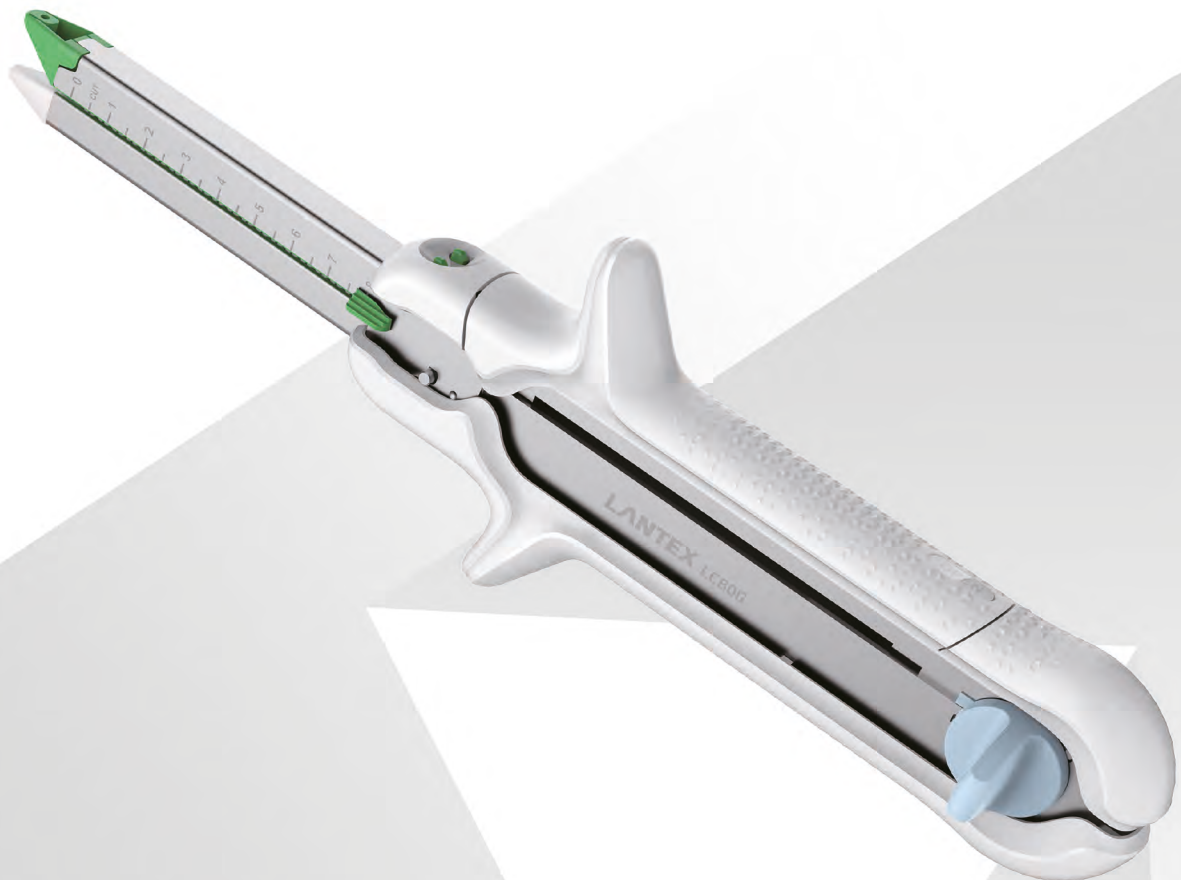




SINGLE USE RELOADABLE LINEAR CUTTER STAPLER AND RELOADS



SUZHOU LANTEX MEDICAL TECHNOLOGY COMPANY LIMITED

Building 7, 58 Xinting Road, High-tech Industrial Zone, 215151 Suzhou, China

Tel: +86 512 6616 7488

Fax: +86 512 6616 7488



Cam gear design ensures consistent staple formation



True intermediate locking position with large jaws opening allows for single handed positioning of linear cutter

Unique firing safety to prevent inadvertent pre-firing during preparation and positioning



Empty cartridge lockout to prevent firing of empty/used cartridges

PRODUCT SPECIFICATIONS

PRODUCT CODE				STAPLE CROWN LENGTH (mm)	STAPLE LEG LENGTH (mm)	CLOSED STAPLE HEIGHT (mm)	STAPLING LINE LENGTH (mm)	STAPLE COUNT
LINEAR CUTTER STAPLER		CARTRIDGE RELOADS						
LC60W	White	LCR60W	White	3.0	2.5	1.0	61	60
LC60B	Blue	LCR60B	Blue	3.0	3.8	1.5	61	60
LC60G	Green	LCR60G	Green	3.0	4.5	2.0	61	60
LC80B	Blue	LCR80B	Blue	3.0	3.8	1.5	81	80
LC80G	Green	LCR80G	Green	3.0	4.5	2.0	81	80

hcp-austria, Aigner Straße 35, A-5026 Salzburg
Tel.: +43 (0)662/62 12 43, Fax: DW -11
office@hcp-austria.com, www.hcp-austria.com

healthcarepartner GmbH

LTX2017LC01EN